

Community Day School Association



Annual Report

2009-2010



Letter from the Executive Director

Executive Director

Caryn Swan Jamero

Board of Directors

Terri Hansen

Colin Frolich

Muguette Gueneguez

Julie Antos

Nicholas Heyer

Matt Adkins

Terry Propst

Peter O'Neil

Nyasha Tunduwani

Sarah Stuckey

Holly Metzger

Leadership Team

Catherine Willis
Cleveland

Director of Development

Brianna Jackson
Director of Operations

Karen Washington
*Manager of Financial
Services*

Rhonda Withrow
*Director of Human
Resources*

2010, A Year of Opportunities Amid Challenges:

Although we experienced a severe economic downturn and a reduction of state revenues for Childcare subsidies, CDSA did not let the steady drumbeat of bad economic news obscure the great work that our agency was able to accomplish, despite all obstacles. We knew we needed to do more with less, source new revenue, and create new partnerships in order to support more Seattle families. With the support of our community and our many collaborations, we have provided high quality care to more low income children than ever before, at a time when the need in our communities was at its greatest.

We partnered with Seattle Public School's, United Way of King County, City of Seattle, Suquamish and Nisqually Indian Tribes, Powerful Schools, SOAR, Children's Alliance, Taproot, School's Out Washington, Seattle Foundation, Childcare Resources, Public Health, Seattle Public Libraries and countless other agencies to advocate and support for the families we serve. We embraced new programs like *Seeds to Success*, *Play and Learn* and *Farm to Table*.

As we approach our 35th year of operation, we remain affordable and accessible to all families. We continue to have no limit on the government subsidies we accept, as well as offering in-house tuition assistance. We continue to respond to our community by bringing the highest quality early learning and out of school time programs to children who most need them. By aligning our curriculum with Seattle Public School grade level standards, and nurturing the physical, social, and emotional health of children, we prepare them for success in kindergarten and beyond.

Our commitment to continuous quality improvement has remained the cornerstone of our success. This year we again met standards for excellence with the National Association for the Education of Young Children (NAEYC), and supported our teachers with ongoing professional development to keep in step with industry best practices.

As we continue a long tradition of supporting children, families, and teachers in our communities, we're looking ahead with hope and optimism. There will be challenges ahead as more families than ever face a vast-growing range of needs. Resources are limited, but we are sustained by the vision that together with our partners and our community we will continue to make a positive impact on children's lives. Ultimately, we are growing members of a healthy happy community -- one that cares for all it's members throughout school, work and life.

- Caryn Swan Jamero
CDSA Executive Director since 1992



A Foundation for Success

Our 'Whole Child' Approach...

The best education is multi-faceted. CDSA teaches:

- empathy through arts and drama
- self expression through music and dance
- science through nature walks and beach combing
- the fun of learning, through a range of exciting activities

In the current economy, our program has grown to match the increasing needs of the families we serve, and to help offset cutbacks in Public Libraries, Public Health, and Public Schools. We continue to proudly maintain no limits on the number of children we serve who come to us on government subsidized tuition for low income families.

We collaborate with an ever-expanding host of industry partners. This year's new partnerships include teachers from *Powerful Schools* who teach empathy through arts and literature, and the Seward Park Audubon Society, where CDSA children take interactive rainforest tours.

Our *Reflective Practice* teaching model is promoted by *Seattle Early Education Collaborative* as a best practice, and ensures culturally appropriate teaching methods. It recognizes that each individual child has a unique learning style. This is a departure from broadly implementing one standard teaching method for all children, and it requires teachers to be flexible, engaged, and bi-lingual.

We provide continuity of care for children by operating all summer long, from 7am to 6pm, at their school site. And in Fall transition to a new grade, we're on site when the school bell rings.

Program Results

CDSA seeks and maintains NAEYC accreditation -- the highest national standardized measurement of program quality. Our NAEYC accreditation process ensures our services are effective on all fronts. NAEYC targets 10 comprehensive standards of quality -- ranging from safety and nutrition to leadership management -- and ensures each area is measured effectively and continually, with a feedback loop for improvement. It also ensures learning is both adult directed and child directed, and incorporates various experiences, backgrounds, needs, and capacities.

This year our 6 CDSA preschools enriched children with:

- 112,800 hours of socio-emotional development
- 75,200 hours of literacy development
- 34,800 hours of small motor skill development
- 37,600 hours of large motor skill development

This high quality enrichment learning resulted in third party measured outcomes of:

*100% of CDSA preschool 'graduates' being fully ready to enter kindergarten, as compared with a King County average of 50% being ready to enter kindergarten.

*4 CDSA preschools scoring among the top 10 highest of all 55 sites measured by *Seattle Early Education Collaborative*, with our highest score being 5.78 (on a scale of 1-6), as compared to the national average of 3.67.

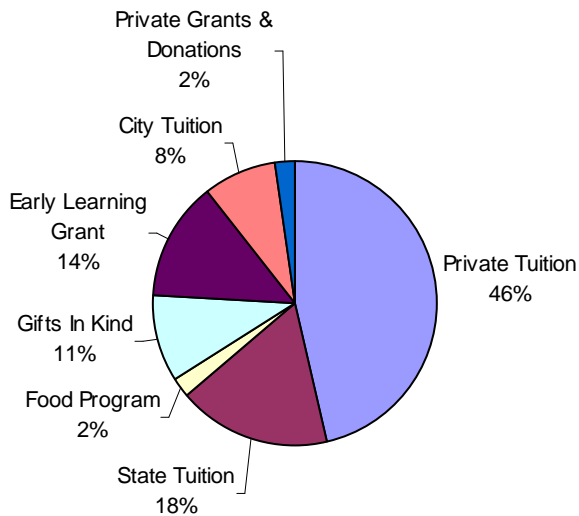
In our 9 before and after school programs, where many children spend equal time with CDSA as they do in their public school classroom, this year's average improvement results (as measured by 3 separate parties — SPS teachers, parents, and our CDSA enrichment teachers) were:

- 91% improvement for socio-emotional development
- 92% improvement for academic achievement



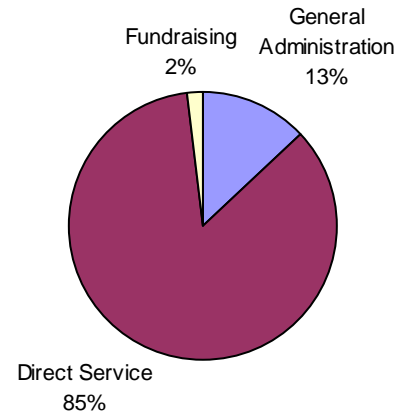
Financial Snapshot

2009 - 2010 Total Revenue



Approximately 27% of CDSA's annual revenue comes from grants and donations, the other 83% comes from private and subsidized tuition.

2009 - 2010 Total Expenses



Approximately 87 cents of every dollar is spent on program services and teacher salaries. The remaining funds are used for administrative expenses.

Total Revenue: \$2,742,473

Earned Revenue from Tuition: \$1,271,478

Government Grants: \$428,132

Private Grants & Donations: \$290,707

Total Expenses: \$ 2,735,843

Direct Service: \$2,323,683

Administration: \$357,565

Fundraising: \$54,595



CDSA Center Directors

Beacon Hill - *Jamie Tarpley*
Hawthorne - *Jaquaila Johnson*
Highland Park- *Nicole Olsen*
Kimball - *Jo Hamer*
Leschi - *Pamela Estrella*

Madrona - *Gabrielle James*
Maple - *Jennifer Cooper*
Montlake - *Amy Alexander*
Sanislo - *Kim Lee*

CDSA Locations

The Families We Serve

- 800 children ages 3-12, from 7am to 6pm, in 9 Seattle neighborhood locations.
- 20% of children are English Language Learners
- 14 languages are spoken in our program
- 70% of children we serve are from low income families, on their school's free and reduced lunch program.

Our Teachers

- Our diverse team of teachers is bilingual in 11 languages
- Over half of our teachers have Bachelors or Masters Degrees in education

For their professional development, our staff join Seattle Public School (SPS) staff in attending specific trainings which are applicable to both CDSA and SPS teachers. We also source expertise from a wide variety of professional coaches, including Champions for Children, School's Out Washington, Child Care Resources, and Seeds to Success. Our staff receives special training in health screening, developmentally appropriate teaching practices, cultural relevancy, special needs, and anti-bias curriculum.

Our Curriculum

At the core of CDSA's success is our experienced staff, and our progressive teaching curriculum. For decades, we've seen the critical difference we've made by providing children with the supplemental learning they need outside their school classrooms.

CDSA improves academic achievement through:

- a bilingual learning environment
- help with homework completion
- strengthened ties with Seattle Public School teachers and resources
- supplemental learning beyond the classroom
- parent and community engagement

CDSA improves emotional growth and self-discovery through:

- engaging and interactive teaching methods
- learning which is focused on self-confidence and team building
- honing communication, listening, and conflict resolution
- a broad range of enrichment activities
- positive adult mentoring

We celebrate cultural diversity in every layer of our program by engaging children in a 'world view' environment where fourteen languages are spoken, decorations and learning 'props' span world cultures, and a bi-lingual staff team reflects the diverse communities we serve.

We believe a diverse learning environment best prepares all children to fully discover themselves, and to thrive in today's world. Ultimately, our program heads off lifelong learning disparities early in a child's life, before their course is set and these disparities become much more difficult to overcome.

Which CDSA location is in your Seattle neighborhood?



Montlake
2409 22nd Ave. E.
Seattle, WA 98112
(206) 323-8299

Madrona
1121 33rd Ave.
Seattle, WA 98122
(206) 709-8887

Leschi
135 32nd Ave.
Seattle, WA 98122
(206) 323-9465

Beacon Hill
2025 14th Ave S
Seattle, WA 98144
(206) 328-7475

Hawthorne
4100 39th Ave. S.
Seattle, WA 98118
(206) 725-2252

Kimball
3200 23rd Ave S
Seattle, WA 98144
(206)725-9738

Highland Park
1012 SW Trenton St.
Seattle, WA 98106
(206) 767-4906

Sanislo
1812 SW Myrtle
Seattle, WA 98106
(206) 763-5910

Maple
4925 Corson Ave. S
Seattle, WA 98108
(206) 768-2480

CDSA Administration
5333 15th Ave. S, Suite 1L
Seattle, WA 98108
P:(206) 726-7972
F: (206)726-1318

This Year's Individual Donors



Cory Albright
Elizabeth Adamitis
Rosalie Alhadeff
Natasha Anderson
Larry & Noriko Arnstein
Terri Bariquit
Carson Barnett
Seok Bee Lim
Elizabeth Benedict
Richard & Jacquelyn Berganio
Cheryl Bergano
Simone Berger
Jane Bradbury
Gene & Elizabeth Brandzel
Yuka Renee Bryce
Kelly Burke
Richard Bushley
Brenda Butler
Clarence Cal, Jr.
Robert Calaff
Elise Chayet
Ellen Bevington
Penny & Buzz Coe
Ken & Julie Cox
Eilileen D'Amelio
Barbara Daniels
Will Daniels
Alison Danz

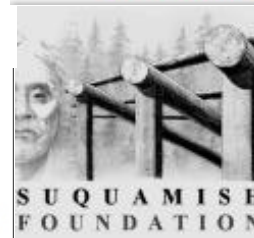
Fran Davidson
Albeta Daye
Elizabeth Dolliver
Philip Thompson
Tracy Domingues
Steve Fong
Tom & Carol Foster
Donald & Ann Frothingham
Ashley Gammell
Curt & Judi Gammell
Irwin Goldberg
Nell Golden-Stewart
Kathleen Groshong
Mugette Guenneguez
James Halfaker
Geir & Amy Hansen
Terri Hansen
Kim Herber
Rebecca Hester
Nicholas Heyer
Margot & Tim Hill
David Hong
Arlin Hunter
Glen Hutchinson
Brianna Jackson
Peter Jamero
Kathy & Mark Jelsing
Shari Jenkins

Roger Kelem
Deborah Keredeman
Bruce & Alvena Kieburz
Michael & Tracie Kinsley
Sandy Kussman
Rodney Lewis
Tana Lin & Paul Holland
Alicia & Calvin Luke
Tina Lundell
Paul Malakoff
Stuart McFeeley
James Nelson
Robert Ness
Alan Newstead
Ann Nieder
David O'Brien
Daniel & Diane O'Neal
Peter O'Neil
Priscilla & Stan Orr
Ernest & Frances Oxton
Rebecca & Matthew Phelps
Judy Poll
Ross Porter
Susan Coldwell
Lucy & Herb Pruzan
Emily Ptasinki
Steve Robinson
Stan & Michele Rosenerry

David Rosenberg
Charley Rosenberry
Jon Sauer
Robert Schoen
Hilary Siebens
Gregg Small
Warren & Nancy Smith
Sheri & John Song
Alan Steele
Douglas & Nancy Steers
Donna Stirton
Melinda Stoffels
Edward Swan & Linda Barnes
Caryn Swan Jamero
James & Diane Taise
David Tarshes
Gayle Teramura
Roger Terriere
Phillip Thompson
Russ & Sara Tousley
Heather Trimm
Manny Uson, Jr.
Marcia Usui
Debbie Van Der Hyde
Warren & Martha Vangenderen
Connie Wentzel
Carrie Williams
Doug & Catherine Willis Cleveland
Debbie Woo

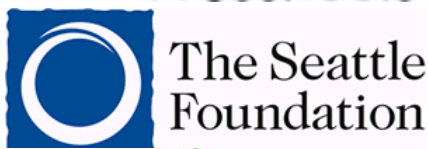
Thank you to all CDSA donors!

Grant Funders & Sponsors



Preschools

Public Health



Seattle & King County



SEATTLE PARKS AND RECREATION

City of Seattle



GroupHealth

“...Because ALL Children Deserve an Equal Start”



CDSA Mission Statement

CDSA is dedicated to providing affordable quality child-care in safe and caring surroundings. We seek to promote each child's intellectual, physical, and social development within our diverse community and with an emphasis on respect for self, others, and the environment.



Community Day School Association Administrative Office

5333 15th Ave S. Suite 1L, Seattle, WA 98108
Phone: 206.726.7972 Fax: 206.726.1318

Visit us on the Web at:
www.communitydayschool.org